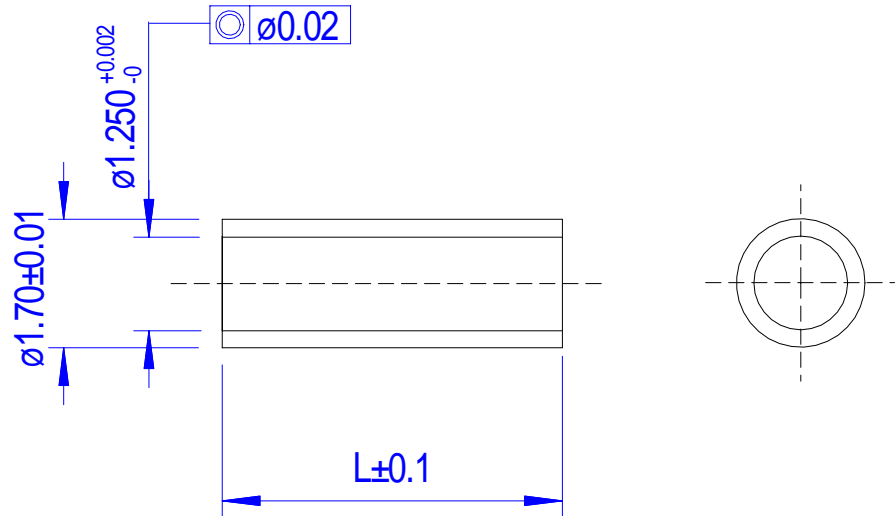


Type	Length (L)
A	3.5 mm
B	4.5 mm



Notes:
1. Break all corners

THIS DRAWING OR SPECIFICATION IS CONFIDENTIAL AND PROPRIETARY TO KIENTEC SYSTEMS, INC. AND MAY NOT BE REPRODUCED, OR DISCLOSED TO OTHERS WITHOUT THE WRITTEN CONSENT OF KIENTEC SYSTEMS, INC.

DIMENSIONS ARE IN MILLIMETERS
.XX ± 0.10

MATERIAL: Zirconia (ZrO₂)

FINISH:

Kientec Systems, Inc.
Stuart, FL 34994

LC SOLID SLEEVE

SIZE	DRAWN BY: C.A.K	DWG NO. SZI-LC-SL	REV
	DATE: 7/1/09		
SCALE 10:1	SHEET 1 of 1		